

# Planning for increasing uncertainty

Ian McNicol  
Cities Research Institute



1

## Acknowledgement of country

---

We acknowledge and pay our respect to the Bundjalung traditional custodians of these lands and waters of NSW, and all Aboriginal Elders, past, present and emerging.

**'If you take care  
of country,  
country will take  
care of you.'**

2

# Future uncertainty

complex,  
compounding,  
and cascading  
risks

(IPCC WG2 AR6 2022)

1 decline of natural resources, particularly water	2 collapse of ecosystems and loss of biodiversity
3 human population growth	<b>4 human-induced climate change</b>
5 chemical pollution	6 rising food insecurity and failing quality
7 weapons of mass destruction	8 pandemics
9 uncontrolled new technology	<b>10 failure to understand and act on risks</b>

3

# Local uncertainty

**CLIMATE IMPACTS**

Land use planning

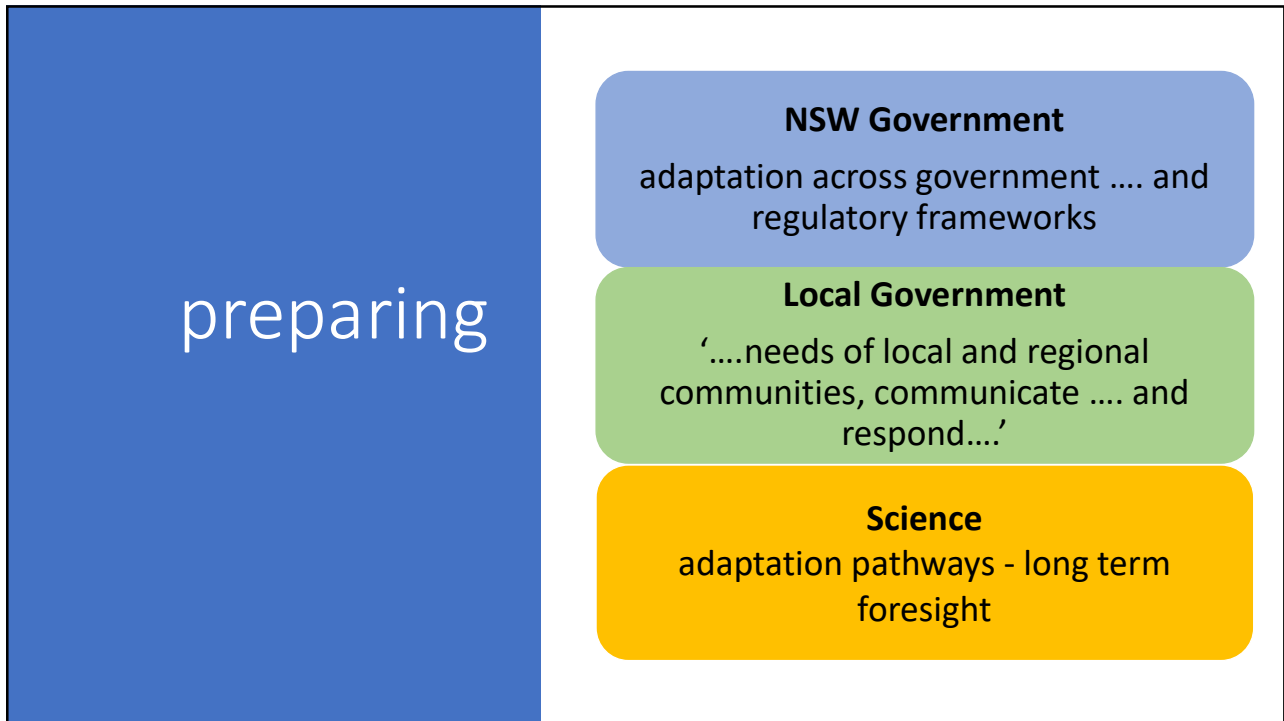
**LOCAL ADAPTATION**

‘We need to change how we do things so we can thrive in a climate that that continues to change.’ (NZ draft NAP 2022)

4



5



6

adaptation pathways

**active learning**

- local visions and values
- systems understanding
- adaptive decisions

**local adaptation**

7

### NSW local planning

*'decision making ... to achieve economic and social growth...'*

local development limits

Strategy

Policy

Compliance

local development & land use restrictions

PLANNING INSTITUTION

LOCAL GOVERNMENT

*'All models are wrong some models are useful.'*  
W. Edwards Deming

8

## adaptive planning

- Local impacts understood
- Plausible local futures
- Enable local preparations

9

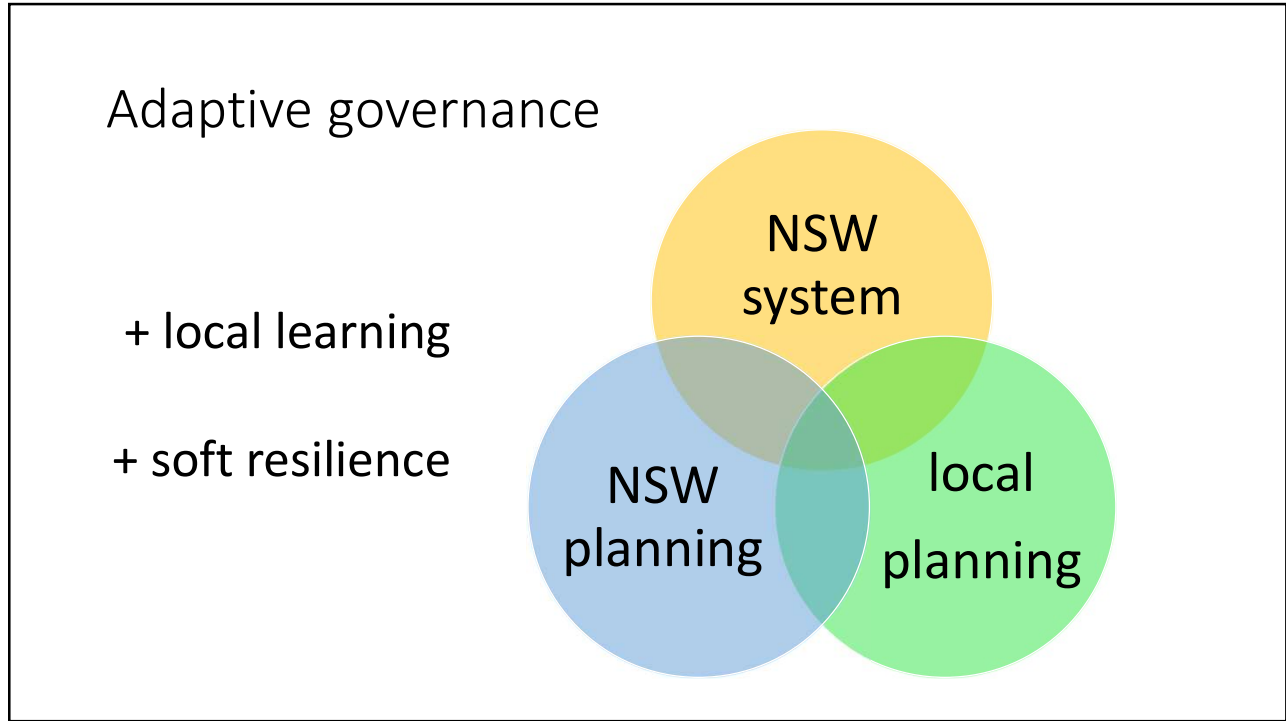
## local preparations

**engineering or hard resilience** -  
keeping human systems as they are  
(resistance)

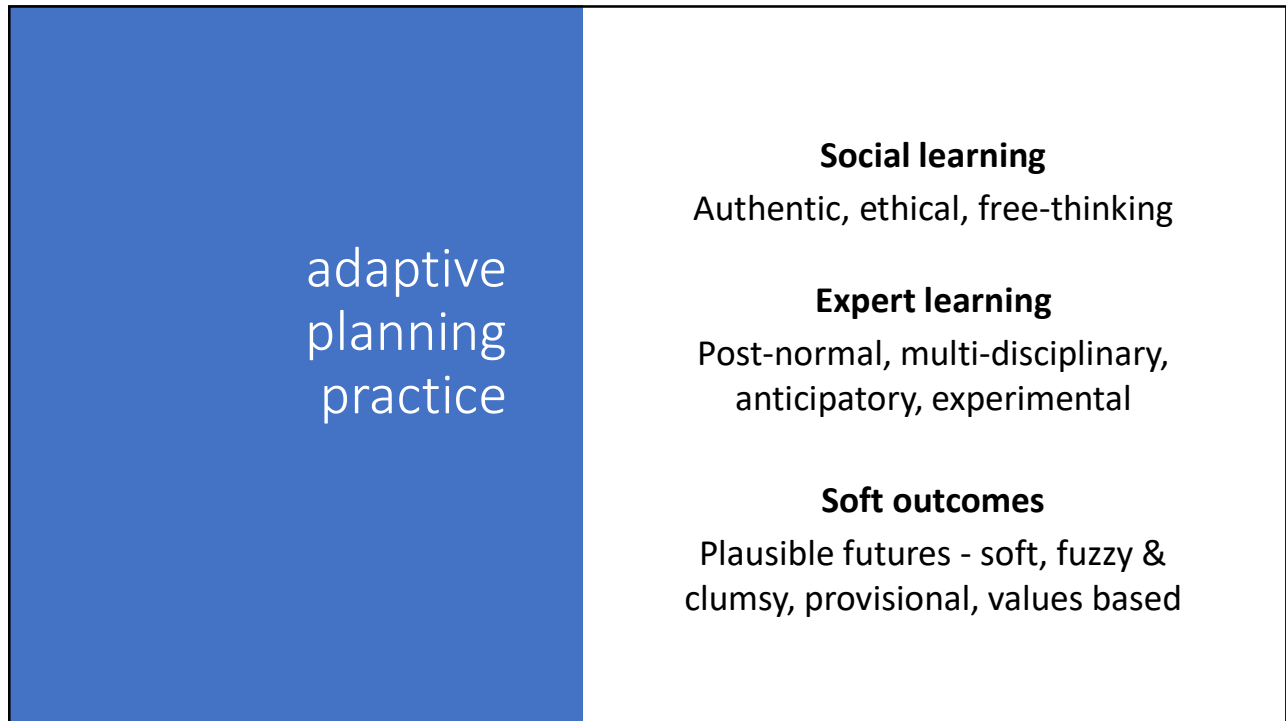
**ecological resilience** -  
protecting natural systems  
(assistance)

**evolutionary or soft resilience** -  
anticipating future disturbances and  
adjusting human systems  
(persistence)

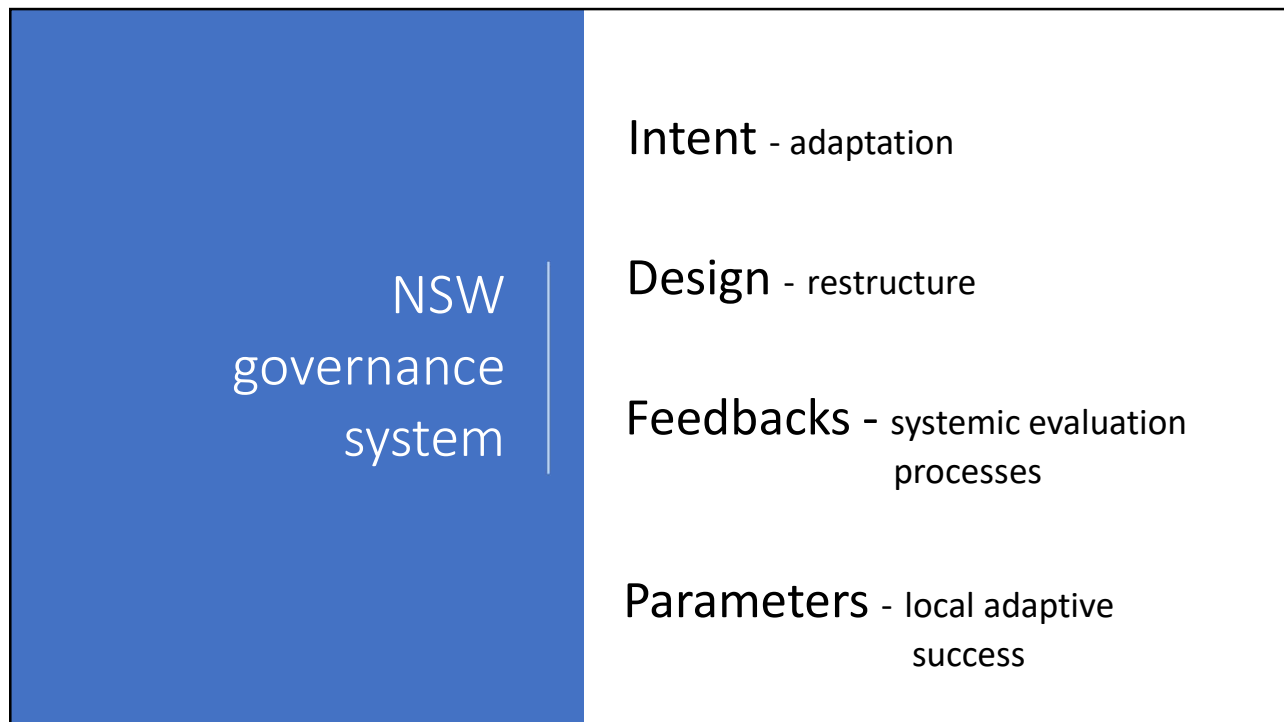
10



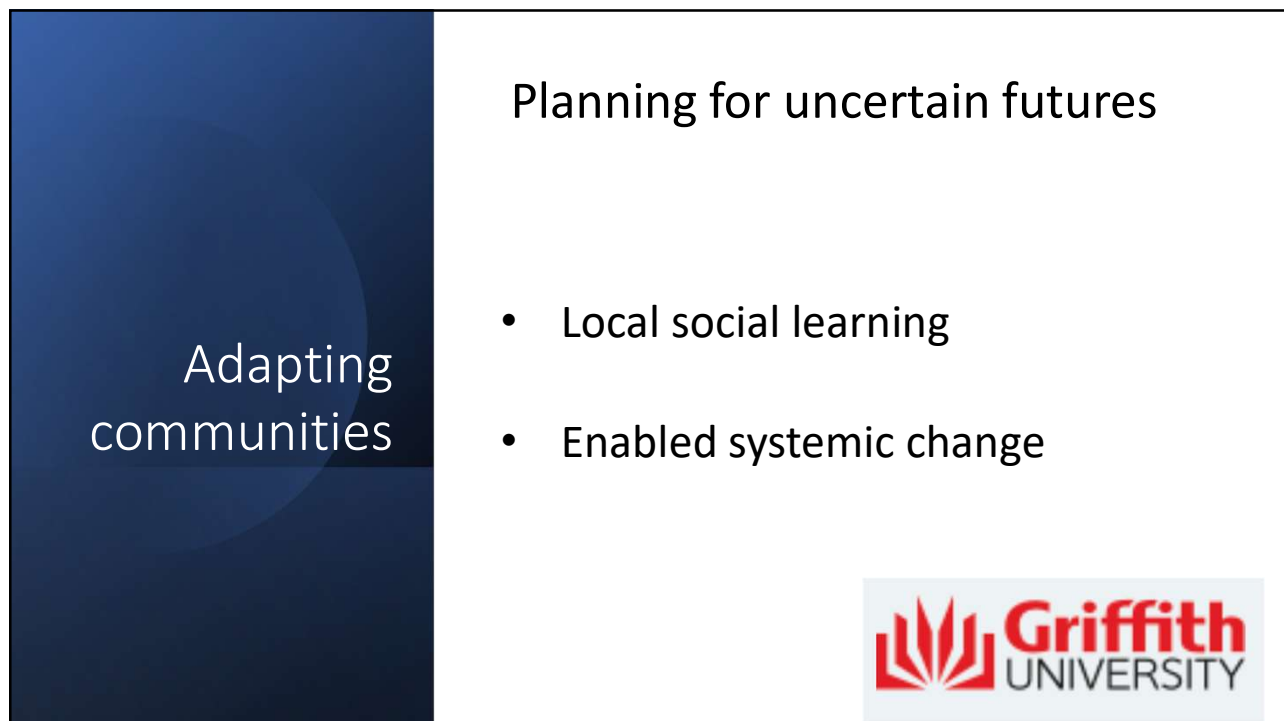
11



12



13



14

## Like to help our research?

Professional and community inputs sought

[ian.mcnicol@griffithuni.edu.au](mailto:ian.mcnicol@griffithuni.edu.au)

